

## Presenting from a USB Drive

The Epson projector's EasyMP PC Free feature lets you give presentations called "Scenarios" from a drive connected to the projector via USB. ***To create a scenario, you need a USB drive connected to your computer. Also make sure you've installed the EMP SlideMaker software.***

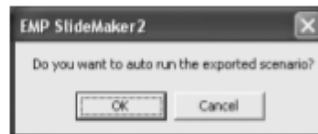
### Converting a PowerPoint File to a Scenario

Follow these steps to convert a PowerPoint file to a scenario.

1. Make sure the EMP SlideMaker program is closed.
2. Locate the PowerPoint file you want to use in My Computer or Windows Explorer.
3. Drag the file icon on top of the EMP SlideMaker2 icon on your desktop.
4. You see a message that some transitions are not supported. Click Continue.
5. When you see the next message, click Start. EMP SlideMaker 2 starts and your PowerPoint slides open one-by-one as they are converted. Do not interrupt this process or your PowerPoint file won't be completely converted.
6. When the scenario is done, click Close. You see the following message:



7. Browse to the drive, then click OK to transfer your scenario file. Click OK again to confirm. Your scenario is transferred to the drive. Once the scenario is transferred, you see this message about the auto-run setting:



The auto-run setting means that the scenario will start playing whenever the projector is turned on (with the drive connected to the projector).

### Presenting Scenarios

Before you begin, connect the USB drive containing the scenario to your projector.

### Controlling Your Scenario

While your scenario is running, use the remote control as follows:

- Press **Enter** or **Page** down to display the next slide.
- Press **Page** up to display the previous slide.
- To exit the scenario at any point, press the **Esc** button. Press the **Enter** button to confirm that you want to exit.

